



# Los Angeles – Developing an Integrated Consolidated Plan

NCDA Region 1  
New England Conference  
November 20, 2014



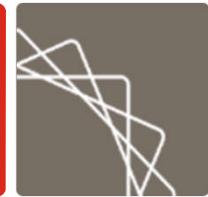
# Goals of LA's Consolidated Plan



- Guide neighborhood level investment in Los Angeles
- Leverage transit investment and funding resources
- Depoliticize decision making



# Bottom Line



To connect plans...

connect people.

# Bringing people together



## Planning

- Education
- Leadership
- Collaboration

## Implementation

- Reorganization
- Commitment
- Collaboration

# Planning Process



- Educated elected officials and commissions on role of Con Plan and what it could do for them.
- Announced high level strategic goals and asked for partnership in reaching them.
- Established Con Plan Working Group and Housing & Community Development Cabinet to develop plan.
- Held place-based investment workshops with broad audience made up of key players.
- Met with city council offices personally to vet approach and discuss concerns.

# Con Plan Working Group



- Staff level – shared responsibility for researching, writing and developing the Con Plan
  - Mayor’s office
  - Community Development
  - Housing
  - Homeless Services
  - Housing Authority
  - Planning
  - Bureau of Engineering
  - Chief Administrative Officer



# Housing & Community Development Cabinet



- Agency management – oversaw strategic direction and approval of the draft Con Plan
  - Mayor’s office – housing, business, TOD
  - Community Development
  - Housing
  - Affordable Housing Commission
  - Commission on Community and Family Services
  - Building & Safety
  - Transportation
  - Housing Authority
  - Homeless Services
  - Planning

# Agency Reorganization



- Created Strategic Planning and Policy Unit within new agency
  - Community Engagement
  - Public Policy & Research
  - Planning & Procurement
  - Community-based Investment
  - Grants Administration
  - Performance Measurement & Evaluation

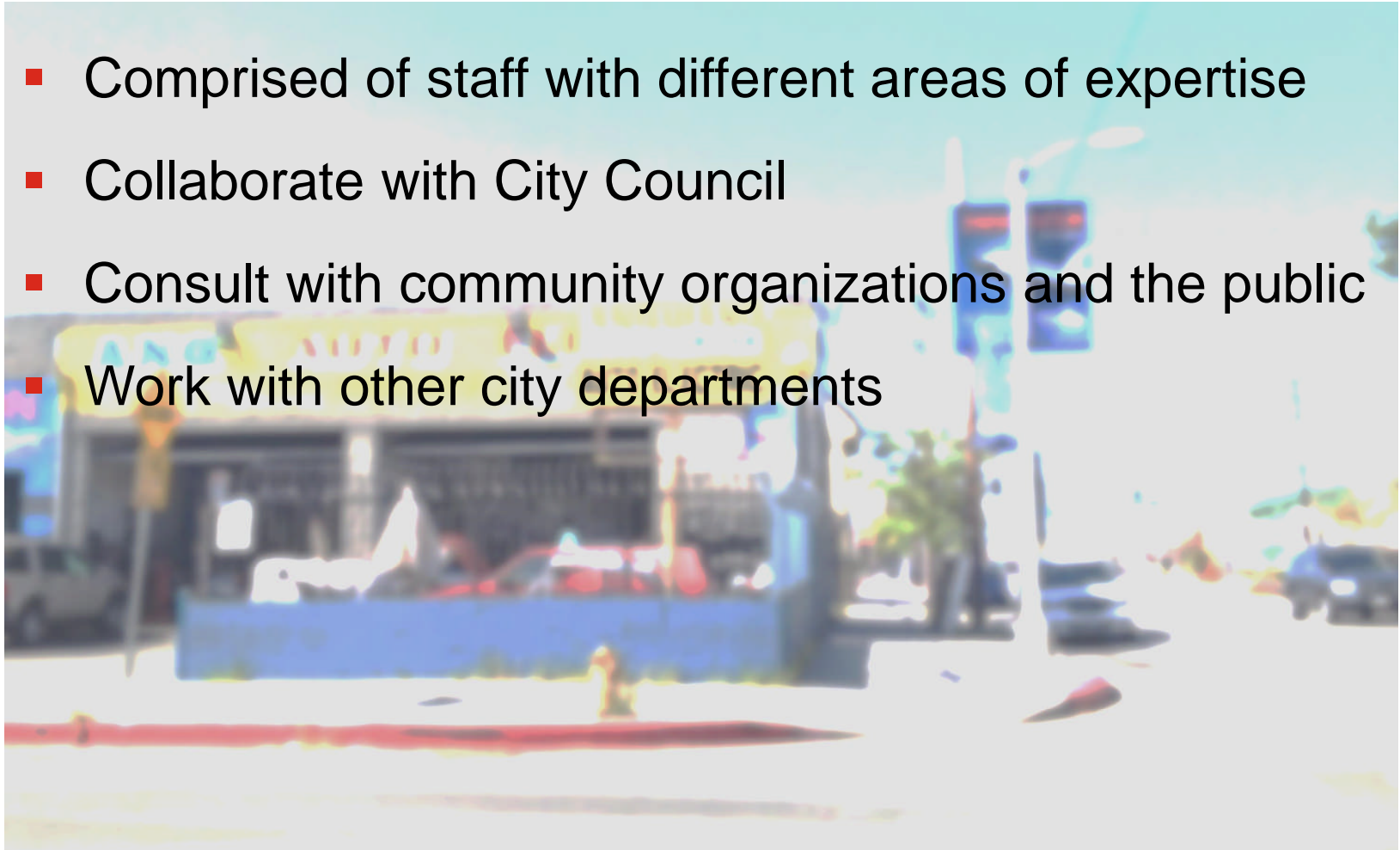




# Strategic Planning Team



- Comprised of staff with different areas of expertise
- Collaborate with City Council
- Consult with community organizations and the public
- Work with other city departments



# Takeaways



- Leadership must set expectation for participation.
- Collaborate with key players and decision makers – create mutual ownership.
- Create an organizational structure to support ongoing efforts.





BOLD  
THINKERS  
DRIVING  
REAL-WORLD  
IMPACT

